

PMConnect Helps Schaller Reduce Downtime

In today's highly competitive manufacturing environment, many industry leaders are finding that accurate, timely and easily-accessible production information is becoming essential for survival.

With that in mind, Minster has introduced PMConnect -- an intuitive production monitoring system that gathers data from manufacturing equipment, generates time sensitive reports, and allows access to production

information from local intranets or any global internet connection.

PMConnect can be used to monitor any brand of press or other production type machines.

The system logs production activities such as: reasons for downtime; machine rates; efficiencies; tooling codes; operator identification; production counters; tonnages; and additional production data. Based upon

this data, PMConnect generates detailed custom reports to provide the exact information required by the user.

Additionally, when PMConnect is installed on a press utilizing Minster's Production Management Control (PMC), it can also provide remote tool storage for all machine parameters.

"Because PMConnect is such a versatile and comprehensive



Schaller Plant Manager Arvidas Pikunas monitors production information on PMConnect software.



Minster 1600-ton E2 Presses are in operation at Schaller's Plant 3. These presses utilize Minster's Production Management Control with PMConnect software, which allows production data to be monitored real-time at all of Schaller's facilities.

system, you can derive value in many different ways," said Pat Ontrop, Minster's Director of Controls, Services and Aftermarket Products. "You can monitor your job profitability, determine equipment and tooling ROI, monitor your Overall Equipment Effectiveness, and you can reduce downtime by identifying and prioritizing downtime sources."

At Schaller Corporation, PMConnect has proven to be an invaluable addition for the progressive manufacturing company located near Detroit. The Schaller Group produces metal stampings, tooling prototypes and assemblies.

"Production monitoring and reporting is an important part of our manufacturing process," said Schaller Plant Manager Arvidas Pikunas. "We have utilized a manual reporting system for years, and we have now begun using the PMConnect on our newer presses."

Schaller produces stamped parts at two separate facilities a few miles apart. PMConnect monitors the production of the Minster E2 1600-ton presses at one facility and utilizes T1 lines to share real-time information at Schaller's other stamping facility.

"It really helps from a remote location to know what parts are being produced on which presses," Pikunas said. "From an efficiency standpoint I know exactly where I'm at."

Besides the instant gratification of production monitoring, PMConnect has helped Schaller reduce downtime and optimize productivity.

"What we found with our manual system was that we were missing a lot of the smaller downtime events," Pikunas said. "When we first installed PMConnect, we set it to require the operators to enter a downtime code if the press was down for five minutes or more. When we reviewed these graphs we found that we were spending much more time than we thought to change part containers."

"We were really surprised how a few minutes here and a few minutes there really added up,"



he continued. “We addressed the situation, made some modifications and reduced our downtime for container changes by over 60 percent.”

Schaller continuously monitors and refines its processes. Currently PMConnect prompts Schaller’s press operators for downtime codes if a press is down for just one minute or more. Supervisors analyze all of this data utilizing the powerful reporting package that is integrated into PMConnect.

“From a reporting standpoint it slices and dices the information any way you want it,” Pikunas said. “You can tailor the reports to suit your needs, and it is easy to input the information into a variety of reporting formats.”

Schaller’s supervisors share the production information with operators by posting PMConnect production reports at the end of each shift.

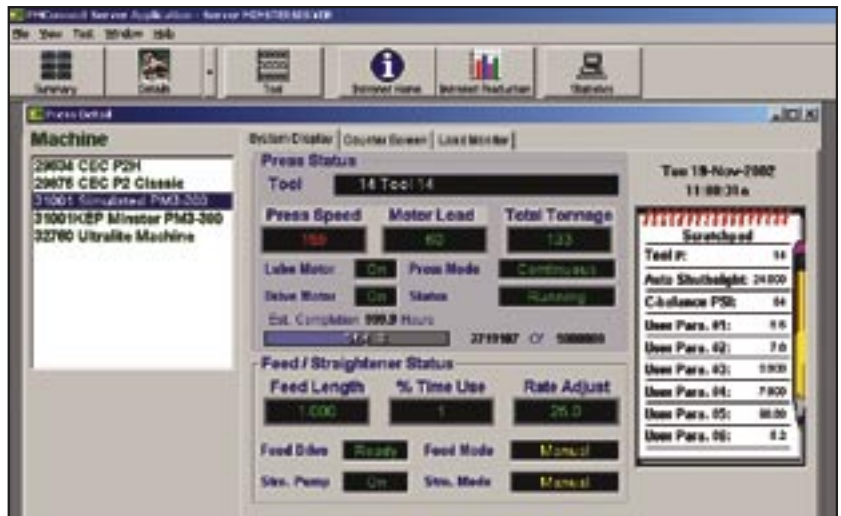
“The foremen want to show the operators how they did at the end of the day,” Pikunas said. “The big thing we look at are the production efficiency ratings.”

But most of all, Pikunas appreciates the accuracy and ease of PMConnect, especially when compared to the manual production reporting system.

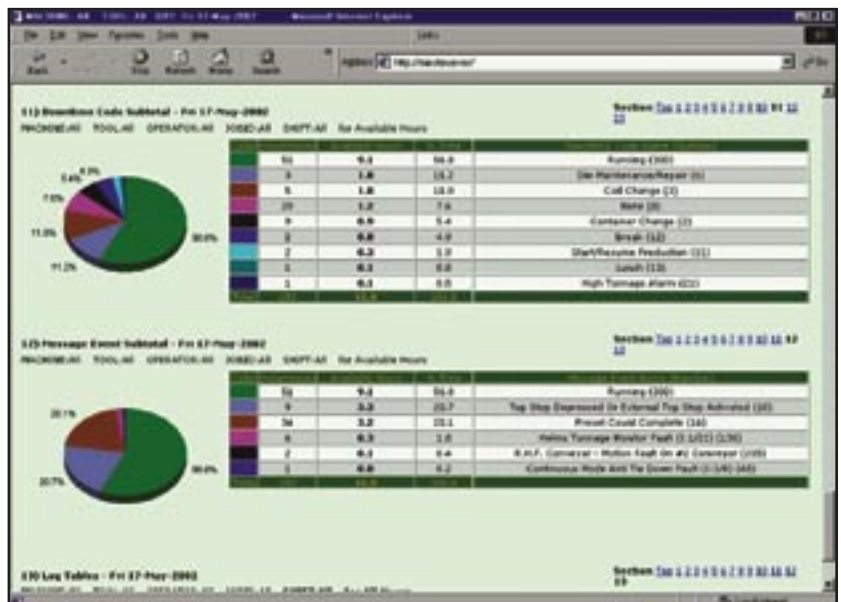
“PMConnect can eliminate a lot of clerical hours spent inputting and retyping data into different computers and programs,” he said. “And the accurate information is a huge advantage. Anyone who is concerned with production reporting has to ask themselves, ‘Are you comfortable with the run time information you are getting that comes in manually?’”

PMConnect can be installed on any type or brand of stamping press as well as other types of production machinery.

For additional information, contact your Minster representative or call Minster direct at 419-628-2331.



Press details screen summarizes machine data.



Downtime codes are tracked to identify pauses in production.



Production and efficiency is tracked at numerous time intervals.